

## SR (S, L, Z, H), SR (S, L, Z, H)-L

**LIGHT TUNNEL WITH RIGID TUBE AND INTEGRATED FLASHING**

**SR (S, L, Z, H) – L - VERSION WITH ADDITIONAL ILLUMINATION OF THE LOFT**

### I. APPLICATION

Light tunnel with integrated flashing for installation in pitched roofs

Parameter	Value / Type	Marking
Roof angle	15° - 60°	
Roof covering type	<b>S</b> – flat roof covering, 2x5mm, e.g. shingles <b>L</b> – flat roof covering, e.g. slates, sheet metal joined by folding seam <b>Z</b> – profile roof covering up to 45mm <b>H</b> – high profile roof covering up to 120mm	-

### IV. TECHNICAL PARAMETERS

Parameter	Unit	Value	Standard
U	[W/m²K]	<b>250 – 2.1</b> <b>350 – 2.0</b> <b>550 – 1.9</b>	PN-EN ISO 10211:2008 PN-EN 1873:2009
Clamping load resistance		<b>DL 2500</b>	PN-EN 1873:2009
Tearing out load resistance		<b>UL 3000</b>	PN-EN 1873:2009
Watertightness		<b>complies</b>	PN-EN 1873:2009
Impact resistance, small hard body		<b>complies</b>	PN-EN 1873:2009
Impact resistance, large soft body		<b>SB 800</b>	PN-EN 1873:2009
Air permeability		<b>Class 3</b>	PN-EN 12207:2001
External pane toughened		<b>1C3</b>	EN 12600

### V. TECHNICAL APPROVAL

ITB Technical Approval	Marking	No. of national Declaration of Conformity
AT-15-9318/2014	Construction mark "B"	<b>No. KWDU01/9318/17</b>



FAKRO PP Sp. z o.o.  
ul. Węgierska 144a  
33-300 Nowy Sącz, Polska

AT-15-9318/2014  
Instytut Techniki Budowlanej

Deklaracja zgodności KDWU01/9318/17 z dnia 02.01.2017

National Declaration of Conformity is to be found in the Intranet:  
[http://intranet.fakro.pl/pl/webfm\\_send/677](http://intranet.fakro.pl/pl/webfm_send/677)

### II. LIGHT TUNNEL ELEMENTS

No.	Element	Quantity	Description
1.	Sash	1	Sash made of extruded aluminium profile. Profile lacquered in RAL 7022 4mm thick toughened pane bonded into sash profile. Mounting frame of light transmitting tube is made of 0.8mm thick aluminium sheet metal or transparent plastic – PMMA (version with illumination)
2.	Frame	1	Made of vacuum impregnated wood. Flashing integrated with the frame is made of 0.6mm thick aluminium sheet metal coated with lacquer in RAL 7022. Pleated flashing apron (version Z and H) made of aluminium – plastic Al/PVC tape
3.	Light transmitting tube	3	Made of 0.5mm thick aluminium sheet metal with Miro-Silver reflective coating. Coating reflective factor – 98%. Length of light transmitting tube single section: 610mm
4.	Elbow	1	Made of aluminium sheet metal with Miro-Silver coating. Adjustment angle: 0-65° <b>Note:</b> SR.. light tunnels in the size of 550 do not include elbow in the set. <u>SRK 550 elbow is only available as an option.</u>
5.	Ceiling frame	1	Made of acrylic (PMMA) with bonded diffuser Cover of the ceiling frame is made of white plastic (HIPS)

### III. SIZES

Light tunnels are available in 3 sizes. **It is not possible to manufacture non-standard sizes.**

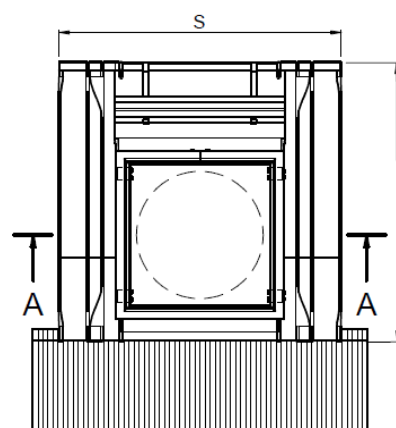
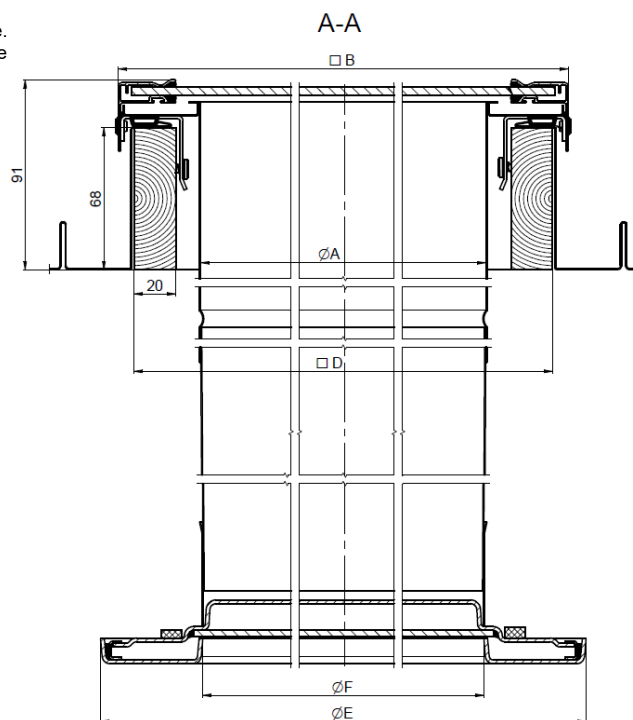
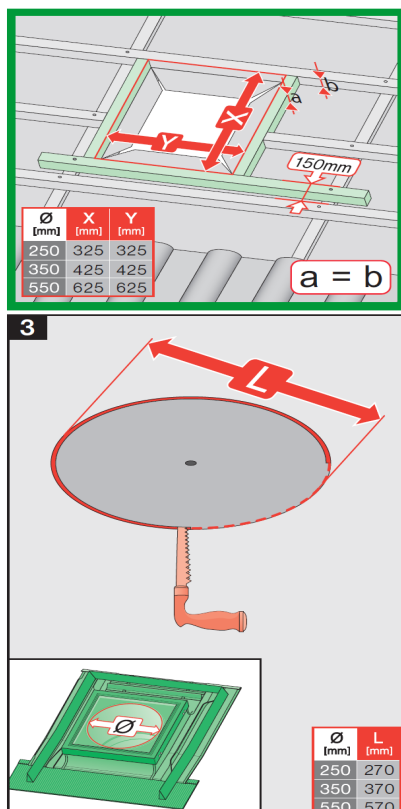
	Light transmitting tube diameter [mm] / length of light transmitting tube in standard set [m]		
	250 / 2,1	350 / 2,1	550 / 1,8
SR(S,L,Z,H)			
SR(S,L,Z,H)-L			

Available sizes

## VI. ASSEMBLY INFORMATION

## VII. DETAILED DIMENSIONS

Commercial size of the light tunnel is diameter of the light transmitting tube. Openings in the roof and ceiling should be prepared as shown in the picture below.



Detailed information concerning installation of SR.. light tunnel is to be found in the Intranet:

[http://intranet.fakro.pl/pl/webfm\\_send/13851](http://intranet.fakro.pl/pl/webfm_send/13851)

Assembly videos:

<http://intranet.fakro.pl/pl/products/skylights/light-tunnels-rigid-light-transmitting-tube/sr/instructions/assembly-movies>

	Maximum recommended length of light transmitting tube [m]		
	250	350	550
SR(S,L,Z,H)	6	12	12
SR(S,L,Z,H)-L	6	12	12

SRC hangers must be used every 4 running metres of light transmitting tube

Rozmiary standardowe SR(Z, H, S, L) -(L),					
Rozmiar	A [mm]	B [mm]	D [mm]	E [mm]	F [mm]
250	252	331	316	348	250
350	352	431	416	448	350
550	552	631	616	648	550

Typ kołnierza	S..Z			S..H			S..S			S..L		
Rozmiar kołnierza	250	350	550	250	350	550	250	350	550	250	350	550
S [mm]	558	658	858	558	658	858	558	658	858	598	698	898
L [mm]	549	649	849	549	649	849	622	722	922	622	722	922